



# CLASS40 WORLD CHAMPIONSHIP

FRANCE - 2022

## SAILING INSTRUCTIONS



**WORD CHAMPIONSHIP CLASS 40**  
**GRAND PAVOIS ORGANISATION (GPO)**  
**From 13 to 18 June 2022**  
**La Rochelle FRANCE**

**SAILING INSTRUCTIONS (SIs)**

The notation '[NP]' in a rule of the sailing instructions (SIs) means that a boat may not protest another boat for breaking that rule. This changes RRS 60.1(a).

**1 RULES**

- 1.1 The event is governed by the rules as defined in The Racing Rules of Sailing.
- 1.2 National prescriptions, translated for non-French-speaking competitors, see appendix in the NOR.

**2 CHANGES TO SAILING INSTRUCTIONS**

- 2.1 Any change to the sailing instructions will be posted before 09:00 on the day it will take effect, except that any change to the schedule of races will be posted by 20:00 on the day before it will take effect.

**3 COMMUNICATIONS WITH COMPETITORS**

- 3.1 Notices to competitors will be posted on the official notice board can be found at following web address <https://world-40.com/>. The jury will communicate via the Jury notice board (see SI 15)
- 3.2 The race office is located at the harbour master's office of the trawler basin.
- 3.3 On the water, the race committee intends to monitor and communicate with competitors on VHF radio channel 72.
- 3.5 [DP][NP] While racing, except in an emergency, a boat shall not make voice transmissions and shall not receive voice communication that is not available to all boats.

**4 SIGNALS MADE ASHORE**

- 4.1 Signals made ashore will be displayed at the Esplanade Eric Tabarly.

## 5 SCHEDULE OF RACES

### 5.1

Monday 13 June	Registration, measurement
Tuesday 14 June	Registration, measurement 14 :30 Skipper's briefing 15 :30 Lock passage 16 :30 Warning signal offshore race
Wednesday 15 June	Offshore race arrival 17 :00 Lock passage 19 :00 Podium ceremony 20 :00 Crews dinner
Thursday 16 June	08 :00 Lock passage 09 :00 Warning signal, races to follow 17 :30 Lock passage 19 :00 Podium ceremony
Friday 17 June	09 :00 Lock passage 10 :00 Warning signal, races to follow 18 :30 Lock passage 19 :00 Podium ceremony
Saturday 18 June	09 :00 Lock passage 10 :00 Warning signal, races to follow 19 :00 Entry parade in "Le Vieux Port" 19 :30 lock passage 21 :30 prize-giving ceremony

5.2 To alert boats that a race or sequence of races will begin soon, the orange starting line flag will be displayed with one sound at least five minutes before a warning signal is made.

## 6 CLASS FLAGS

6.1 The class flag is a flag with the logo of the International Class40 Class.

## 7 RACING AREA

7.1 The offshore course racing area will be the Bay of Biscay.

7.2 The windward/leeward and costal racing areas will be the waters around Ré and Oléron islands.

## 8 COURSES

8.1 The courses could be offshore, windward/leeward and costal.

8.2 No later than the warning signal, the race committee signal vessel will display the approximate compass bearing of the first leg.

8.3 The offshore course diagrams are on APPENDIX A attached to these Sis. They show the courses, the order in which marks are to be passed, and the side on which each mark is to be left.

8.4 Courses will be advised by the race committee by VHF, on the channel described in

SI3, before fleet warning signal.

## 9 MARKS

- 9.1 For windward/leeward races: Mark 1, 1bis, 2 and 2bis: Orange inflatable buoy.
- 9.2 Finish Mark: white inflatable buoy.
- 9.3 Change course mark: Black inflatable buoy.
- 9.4 For the offshore courses or coastal races Orange inflatable buoys could be used.
- 9.5 The marks position's given are approximate and will not be ground for redress

## 10 THE START

- 10.1 Races will be started using RRS 26.
- 10.2 The starting line is between a staff displaying an orange flag on the signal vessel at the starboard end and the port side of the start vessel displaying an orange flag.
- 10.3 The approximate position of the race area is located: 46°06.100 N; 001°13.000 W

## 11 CHANGE OF THE NEXT LEG OF THE COURSE

- 11.1 To change the next leg of the course, the race committee will lay a new mark (or move the finishing line) and remove the original mark as soon as practicable. When in a subsequent change a new mark is replaced, it will be replaced by an original mark.

## 12 THE FINISH

- 12.1 The finishing line will be between a staff displaying a blue flag on the race committee vessel and the course side of the finishing mark (White).

## 13 PENALTY SYSTEM

- 13.1 RRS 44.1 is changed so that the Two-Turns Penalty is replaced by the One-Turn Penalty.
- 13.2 With the permission from the "Commission Centrale d'Arbitrage" of the Fédération Française de Voile, Appendix "Semi-Direct" applies (see Appendix C in these SI).

## 14 TIME LIMITS [AND TARGET TIMES]

- 14.1 The Mark 1 Time Limit, Race Time Limit (see RRS 35), and the Finishing Window are shown in the table below.

Mark 1 Time Limit	Race Time Limit	Finishing Window
30mn	2h30	20mn

- 14.2 If no boat has passed the first mark within the Mark 1 Time Limit, the race will be abandoned.
- 14.3 Boats failing to finish within the Finishing Window shall be scored Did Not Finish without a hearing. This changes RRS 35, A5.1 and A5.2.
- 14.4 Target time is 1H30 for windward/leeward courses. Failure to meet the Target Time will not be grounds for redress. This changes RRS 62.1(a).

## **15 HEARING REQUESTS**

The jury will use the following website to communicate about hearings: <https://www.racingrulesofsailing.org/events/3998>

- 15.1 The protest time limit is 30 minutes after the last boat enters the harbour (evening lock passage). The time will be posted on the jury notice board.
- 15.2 Hearing request forms are available on line and/or at the jury office will be close to the Race management office.
- 15.3 Notices will be posted on the jury notice board no later than 30 minutes after the protest time limit to inform competitors of hearings in which they are parties or named as witnesses. Hearings will be held in the protest room, located at the jury office will be close to the Race management office, beginning at the time posted.
- 15.4 Decisions of the float jury may be made during the race.
- 15.5 An international jury will be appointed in accordance with RRS 91(b). Decisions of the International Jury will be final as provided by RRS 70.5.

## **16 SCORING**

- 16.1 Three races are required to be completed to constitute a series.
- 16.2 Coefficient 3 will be applied for offshore race.
- 16.3 Coefficient 1 will be applied for windward/leeward and short costal races. (less than 20 miles)
- 16.4 Coefficient 1.5 will be applied for long costal races. (more than 20 miles)
- 16.5 A boat's series score will be the total of her race scores.

## **17 SAFETY REGULATIONS**

- 17.1 [DP] A boat that retires from a race shall notify the race committee at the first reasonable opportunity.
- 17.2 While racing, all boats shall have their AIS transponder switched on, transmitting and receiving
- 17.3 Competitors shall keep permanent watch on both 16 and 72 channels.
- 17.4 A boat shall not enter in an area designated as an Obstruction when racing – See Appendix B.
- 17.5 Cargo ship have priority in their channel approach (La Pallice Harbour fairway)
- 17.6 Wearing lifejacket is mandatory during offshore race
- 17.7 Wearing AIS MOB beacon is recommended during offshore race

## **18 REPLACEMENT OF CREW OR EQUIPMENT**

- 18.1 [DP] Substitution of competitors after reception of your crew list is not allowed without prior written approval of the race committee.
- 18.2 [DP] Substitution of damaged or lost equipment is not allowed unless authorized in writing by the race committee. Requests for substitution shall be made to the committee at the first reasonable opportunity, which may be after the race.

## **19 EQUIPMENT AND MEASUREMENT CHECKS**

- 19.1 A boat or equipment may be inspected at any time for compliance with the class rules, notice of race and sailing instructions.
- 19.2 [DP] When instructed by a race official on the water, a boat shall proceed to a designated area for inspection.

## **20 OFFICIAL VESSELS**

- 20.1 Official vessels will show a GPO flag.
- 20.2 Jury vessels will be identified with a yellow "Jury" flag.

## **21 BERTHING**

- 21.1 [DP] Boats shall be kept in their assigned places in the harbour

## **22 HAUL-OUT RESTRICTIONS**

- 22.1 [DP] Boats shall not be hauled out during the event except with and according to the terms of prior written permission of the race committee.

## **23 PRIZES**

- 23.1 The Prizegiving will take place at Avenue de la Capitainerie Port des Minimes, La Rochelle on Saturday 18th June from 21:30 local time.

## **24 RISK STATEMENT**

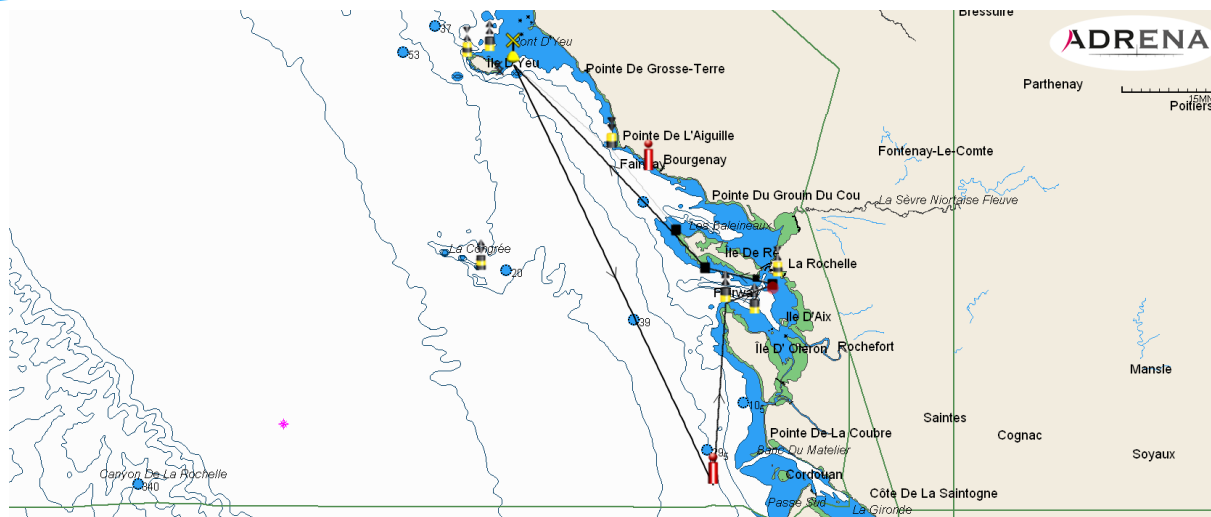
- 24.1 RRS 3 states: 'The responsibility for a boat's decision to participate in a race or to continue to race is hers alone.' By participating in this event each competitor agrees and acknowledges that sailing is a potentially dangerous activity with inherent risks. These risks include strong winds and rough seas, sudden changes in weather, failure of equipment, boat handling errors, poor seamanship by other boats, loss of balance on an unstable platform and fatigue resulting in increased risk of injury. Inherent in the sport of sailing is the risk of permanent, catastrophic injury or death by drowning, trauma, hypothermia or other causes.

## **25 INSURANCE**

- 25.1 Each participating boat shall be insured with valid third-party liability insurance with a minimum cover of 1.5 M€ per incident or the equivalent.

# APPENDIX A

## OFFSHORE 1



### OFFSHORE 1-A (Approx 170 NM)

Order	Waypoint		Side	Position
1	OFFSET MARK (Optional)			
2	CHAUVEAU	Left	Starboard	46°08,030 N 001°16,417 W
3	CHANCHARDON	Left	Starboard	46°09,714 N 001°28,414 W
4	LES BALEINAUX	Left	Starboard	46°15,821 N 001°35,199 W
5	PETITE BARGE	Left	Starboard	46°28,901 N 001°50,612 W
6	CÂBLES ILE D'YEU	Rounded and left	Port	46°42,605 N 002°13,689 W
7	BXA	Rounded and left	Port	45°34,096 N 001°26,651 W
8	ANTIOCHE	Left	Starboard	46°03,936 N 001°23,715 W
9	FINISH LINE (Approx)			46°07,000 N 001°12,500 W

### OFFSHORE 1-B (Approx 170 NM)

Order	Waypoint		Side	Position
1	OFFSET MARK (Optional)			
2	ANTIOCHE	Left	Port	46°03,936 N 001°23,715 W
3	BXA	Rounded and left	Starboard	45°34,096 N 001°26,651 W
4	CÂBLES ILE D'YEU	Rounded and left	Starboard	46°42,605 N 002°13,689 W
5	PETITE BARGE	Left	Port	46°28,901 N 001°50,612 W
6	LES BALEINAUX	Left	Port	46°15,821 N 001°35,199 W
7	CHANCHARDON	Left	Port	46°09,714 N 001°28,414 W
8	CHAUVEAU	Left	Port	46°08,030 N 001°16,417 W
9	FINISH LINE (Approx)			46°07,000 N 001°12,500 W



# OFFSHORE 2

**CLASS40**  
WORLD  
CHAMPIONSHIP  
FRANCE - 2022



## OFFSHORE 2-A (Approx 190 NM)

Order	Waypoint		Side	Position
1	OFFSET MARK (Optional)			
2	CHAUVEAU	Left	Starboard	46°08,030 N 001°16,417 W
3	CHANCHARDON	Left	Starboard	46°09,714 N 001°28,414 W
4	LES BALEINAUX	Left	Starboard	46°15,821 N 001°35,199 W
5	PETITE BARGE	Left	Starboard	46°28,901 N 001°50,612 W
6	EST MYTILICOLE	Left	Port	46°42,526 N 002°16,908 W
7	LES CHIENS PERRINS	Left	Port	46°43,609 N 002°24,579 W
8	ROCHEBONNE SE	Left	Port	46°09,123 N 002°21,290 W
9	BXA	Rounded and left	Port	45°34,096 N 001°26,651 W
10	ANTIOCHE	Left	Starboard	46°03,936 N 001°23,715 W
11	LONGE BOYARD NORD	Left	Port	46°01,988 N 001°16,898 W
12	FINISH LINE (Approx)			46°07,000 N 001°12,500 W

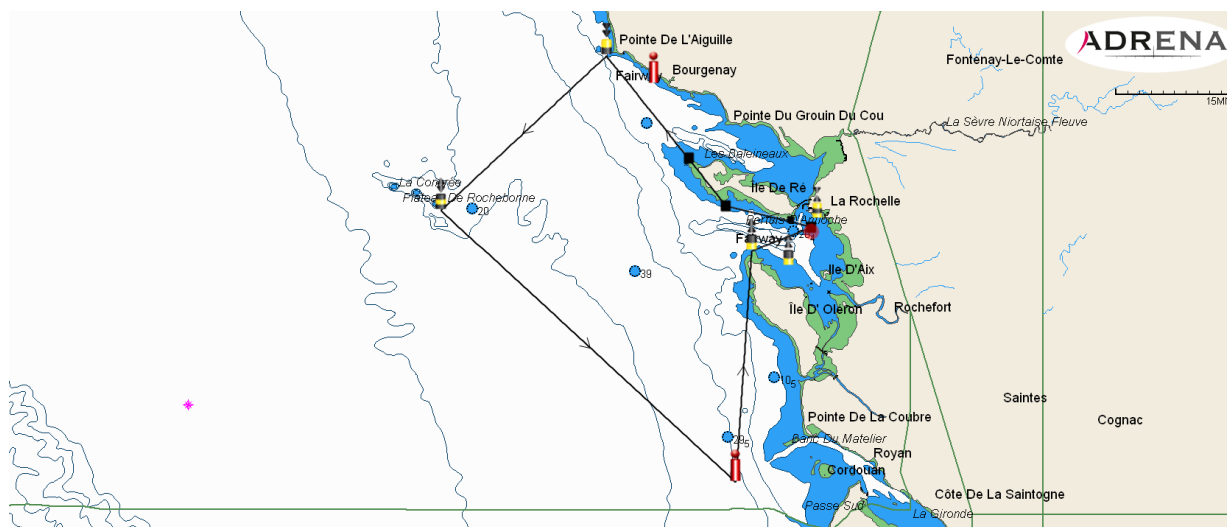
## OFFSHORE 2-B (Approx 190 NM)

Order	Waypoint		Side	Position
1	OFFSET MARK (Optional)			
2	LONGE BOYARD NORD	Left	Starboard	46°01,988 N 001°16,898 W
3	ANTIOCHE	Left	Port	46°03,936 N 001°23,715 W
4	BXA	Rounded and left	Starboard	45°34,096 N 001°26,651 W
5	ROCHEBONNE SE	Left	Starboard	46°09,123 N 002°21,290 W
6	LES CHIENS PERRINS	Left	Starboard	46°43,609 N 002°24,579 W
7	EST MYTILICOLE	Left	Starboard	46°42,526 N 002°16,908 W
8	PETITE BARGE	Left	Port	46°28,901 N 001°50,612 W
9	LES BALEINAUX	Left	Port	46°15,821 N 001°35,199 W
10	CHANCHARDON	Left	Port	46°09,714 N 001°28,414 W
11	CHAUVEAU	Left	Port	46°08,030 N 001°16,417 W
12	FINISH LINE ( Approx )			46°07,000 N 001°12,500 W





# OFFSHORE 3



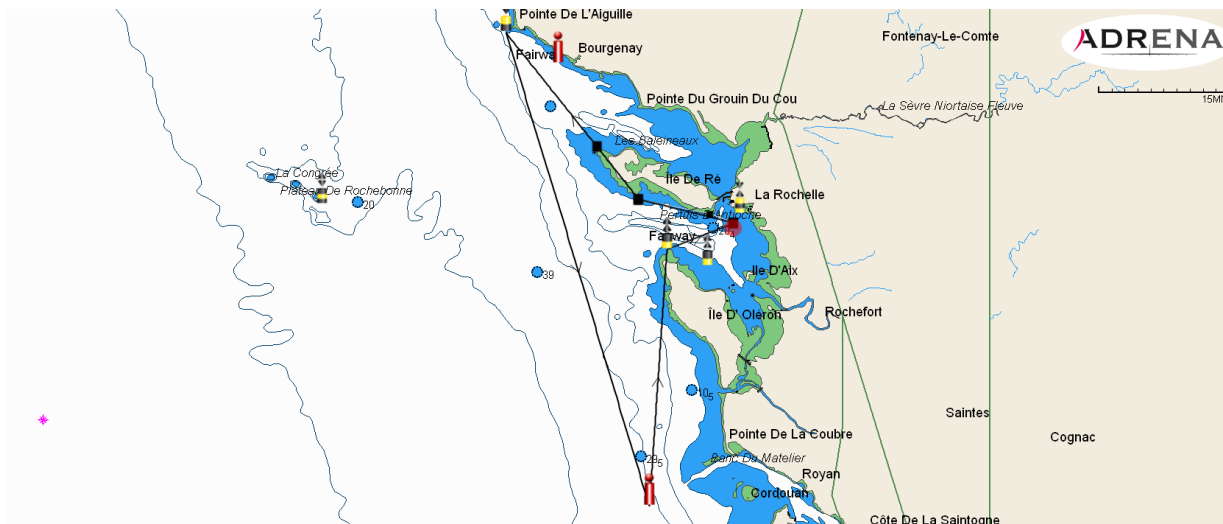
## OFFSHORE 3-A (Approx 155 NM)

Order	Waypoint		Side	Position
1	OFFSET MARK (Optional)	Rounded and left		
2	CHAUVEAU	Left	Starboard	46°08,030 N 001°16,417 W
3	CHANCHARDON	Left	Starboard	46°09,714 N 001°28,414 W
4	LES BALEINAUX	Left	Starboard	46°15,821 N 001°35,199 W
5	PETITE BARGE	Rounded and left	Port	46°28,901 N 001°50,612 W
6	ROCHEBONNE SE	left	Port	46°09,123 N 002°21,290 W
7	BXA	Rounded and left	Port	45°34,096 N 001°26,651 W
8	ANTIOCHE	Left	Starboard	46°03,936 N 001°23,715 W
9	FINISH LINE (Approx)			46°07,000 N 001°12,500 W

## OFFSHORE 3-B (Approx 155 NM)

Order	Waypoint		Side	Position
1	OFFSET MARK (Optional)	Rounded and left		
2	ANTIOCHE	Left	Port	46°03,936 N 001°23,715 W
3	BXA	Rounded and left	Starboard	45°34,096 N 001°26,651 W
4	ROCHEBONNE SE	left	Starboard	46°09,123 N 002°21,290 W
5	PETITE BARGE	Rounded and left	Starboard	46°28,901 N 001°50,612 W
6	LES BALEINAUX	Left	Port	46°15,821 N 001°35,199 W
7	CHANCHARDON	Left	Port	46°09,714 N 001°28,414 W
8	CHAUVEAU	Left	Port	46°08,030 N 001°16,417 W
9	FINISH LINE (Approx)			46°07,000 N 001°12,500 W

# OFFSHORE 4



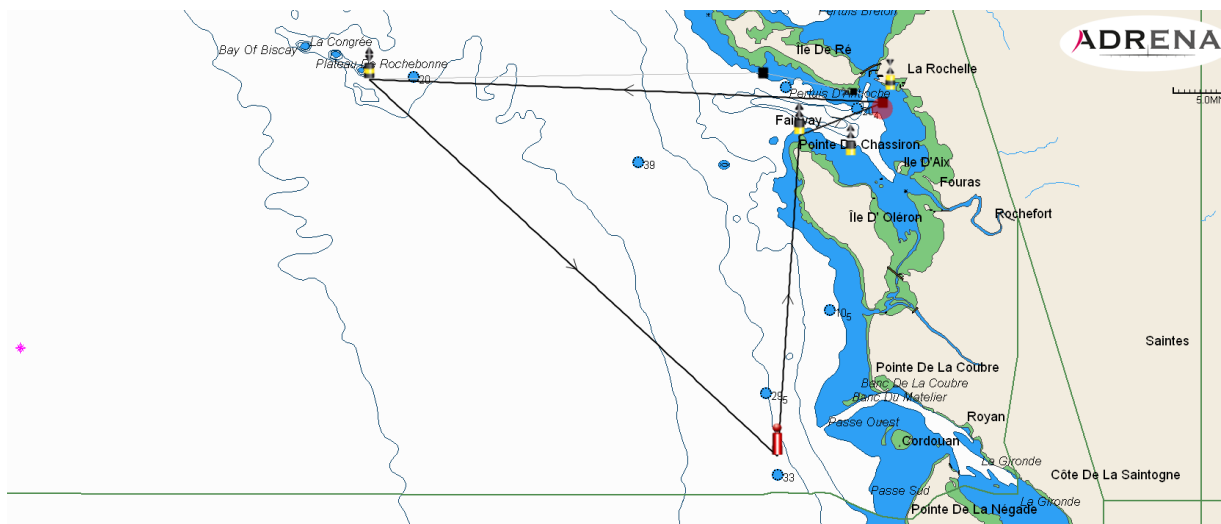
## OFFSHORE 4-A (Approx 131 NM)

Order	Waypoint		Side	Position
1	<b>OFFSET MARK (Optional)</b>	Rounded and left		
2	<b>CHAUVEAU</b>	Left	Starboard	46°08,030 N 001°16,417 W
3	<b>CHANCHARDON</b>	Left	Starboard	46°09,714 N 001°28,414 W
4	<b>LES BALEINAUX</b>	Left	Starboard	46°15,821 N 001°35,199 W
5	<b>PETITE BARGE</b>	Rounded and left	Port	46°28,901 N 001°50,612 W
6	<b>BXA</b>	Rounded and left	Port	45°34,096 N 001°26,651 W
7	<b>ANTIOCHE</b>	Left	Starboard	46°03,936 N 001°23,715 W
8	<b>FINISH LINE (Approx)</b>			46°07,000 N 001°12,500 W

## OFFSHORE 4-B (Approx 131 NM)

Order	Waypoint		Side	Position
1	<b>OFFSET MARK (Optional)</b>	Rounded and left		
2	<b>ANTIOCHE</b>	Left	Port	46°03,936 N 001°23,715 W
3	<b>BXA</b>	Rounded and left	Starboard	45°34,096 N 001°26,651 W
4	<b>PETITE BARGE</b>	Rounded and left	Starboard	46°28,901 N 001°50,612 W
5	<b>LES BALEINAUX</b>	Left	Port	46°15,821 N 001°35,199 W
6	<b>CHANCHARDON</b>	Left	Port	46°09,714 N 001°28,414 W
7	<b>CHAUVEAU</b>	Left	Port	46°08,030 N 001°16,417 W
8	<b>FINISH LINE (Approx)</b>			46°07,000 N 001°12,500 W

# OFFSHORE 5



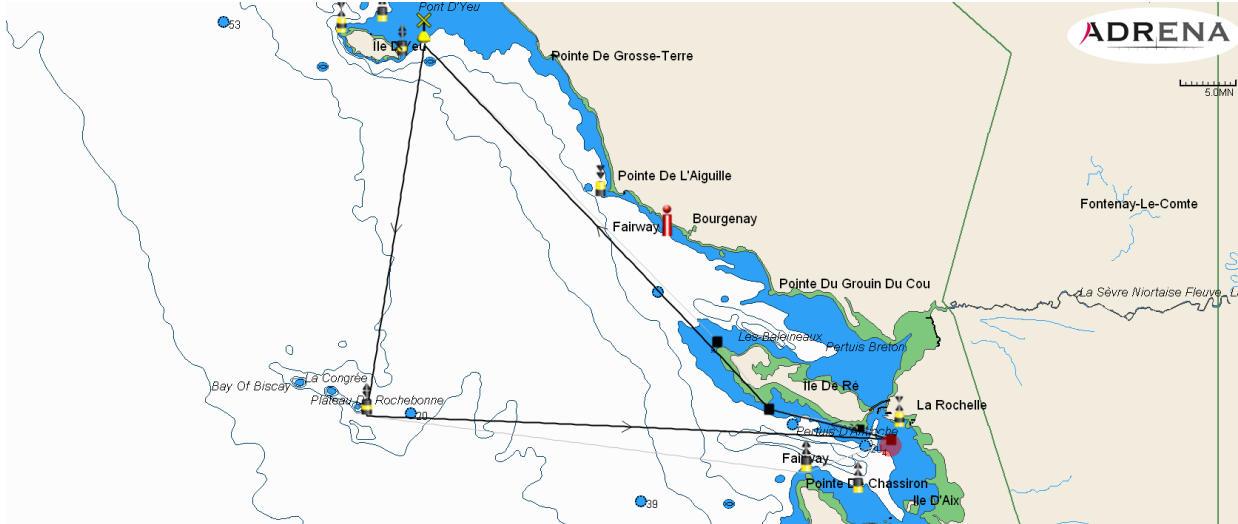
## OFFSHORE 5-A ( Approx 138 NM)

Order	Waypoint		Side	Position
1	OFFSET MARK (Optional)	Rounded and left		
2	CHAUVEAU	Left	Starboard	46°08,030 N 001°16,417 W
3	CHANCHARDON	Left	Starboard	46°09,714 N 001°28,414 W
4	ROCHEBONNE SE	Rounded and left	Port	46°09,123 N 002°21,290 W
5	BXA	Rounded and left	Port	45°34,096 N 001°26,651 W
6	ANTIOCHE	Left	Starboard	46°03,936 N 001°23,715 W
7	FINISH LINE ( Approx)			46°07,000 N 001°12,500 W

## OFFSHORE 5-B ( Approx 138 NM)

Order	Waypoint		Side	Position
1	OFFSET MARK (Optional)	Rounded and left		
2	ANTIOCHE	Left	Port	46°03,936 N 001°23,715 W
3	BXA	Rounded and left	Starboard	45°34,096 N 001°26,651 W
4	ROCHEBONNE SE	Rounded and left	Starboard	46°09,123 N 002°21,290 W
5	CHANCHARDON	Left	Port	46°09,714 N 001°28,414 W
6	CHAUVEAU	Left	Port	46°08,030 N 001°16,417 W
7	FINISH LINE (Approx)			46°07,000 N 001°12,500 W

# OFFSHORE 6



## OFFSHORE 6-A (Approx 138 NM)

Order	Waypoint		Side	Position
1	OFFSET MARK (Optional)	Rounded and left		
2	CHAUVEAU	Left	Starboard	46°08,030 N 001°16,417 W
3	CHANCHARDON	Left	Starboard	46°09,714 N 001°28,414 W
4	LES BALEINAUX	Left	Starboard	46°15,821 N 001°35,199 W
5	CÂBLES ILE D'YEU	Rounded and left	Port	46°42,605 N 002°13,689 W
6	ROCHEBONNE SE	Rounded and left	Port	46°09,123 N 002°21,290 W
7	ANTIOCHE	Left	Starboard	46°03,936 N 001°23,715 W
8	FINISH LINE (Approx)			46°07,000 N 001°12,500 W

## OFFSHORE 6-B (Approx 138 NM)

Order	Waypoint		Side	Position
1	OFFSET MARK (Optional)	Rounded and left		
2	ANTIOCHE	Left	Port	46°03,936 N 001°23,715 W
3	ROCHEBONNE SE	Rounded and left	Starboard	46°09,123 N 002°21,290 W
4	CÂBLES ILE D'YEU	Rounded and left	Starboard	46°42,605 N 002°13,689 W
5	LES BALEINAUX	Left	Port	46°15,821 N 001°35,199 W
6	CHANCHARDON	Left	Port	46°09,714 N 001°28,414 W
7	CHAUVEAU	Left	Port	46°08,030 N 001°16,417 W
8	FINISH LINE (Approx)			46°07,000 N 001°12,500 W

# APPENDIX B

ZONE MYTILICOLE YEU		
BUOY A	46°42,656 N	002°17,243 W
BUOY B	46°42,507 N	002°17,590 W
BUOY C	46°42,074 N	002°17,145 W
BUOY D	46°42,228 N	002°16,830 W

ZONE MYTILICOLE PERTUIS BRETON		
NORTH CARDINAL	46°17.179 N	001°22.182 W
WEST CARDINAL	46°16.282 N	001°22.882 W
SPECIAL BUOY	46°15.643 N	001°21.511 W
SOUTH CARDINAL	46°15.183 N	001°20.008 W
SPECIAL BUOY	46°15.199 N	001°18.924 W
EAST CARDINAL	46°15.798 N	001°18.422 W
SPECIAL BUOY	46°16.630 N	001°20.773 W

CULTURE MARINE ANSE DE LA MALECONCHE		
NORTH CARDINAL	46°01.191 N	001°16.683 W
SPECIAL BUOY	46°00.844 N	001°17.164 W
WEST CARDINAL	46°00.431 N	001°17.763 W
SPECIAL BUOY	46°00.052 N	001°17.203 W
SPECIAL BUOY	45°59.985 N	001°15.875 W
SOUTH CARDINAL	45°59.691 N	001°14.960 W
EAST CARDINAL	45°59.856 N	001°14.762 W
SPECIAL BUOY	46°00.520 N	001°15.704 W

CULTURE MARINE RADE DES BASQUES		
NORTH CARDINAL	46°04.670 N	001°10.188 W
WEST CARDINAL	46°03.062 N	001°09.877 W
SOUTH CARDINAL	46°02.930 N	001°09.415 W
EAST CARDINAL	46°04.627 N	001°09.694 W

# APPENDIX **C** JURY DECISIONS AFLOAT DURING

*The rules of this appendix change the RRS 44.1, 60.1, 62.1, 63.1, 64.1, 66 and 70*

- SD1 RRS 44.1 is changed so that the two-turns penalty is replaced by a one-turn penalty.
- SD2 If the jury sees an incident in which a rule of the RRS Part 2 or RRS 31 is infringed, he may indicate his observation displaying a red flag and making a sound signal.
- SD3 If a boat involved in an incident in which a rule of part 2 has been broken, or if she sees a boat breaking rule 31 or 42, this boat may protest hailing « Protest »
- If no boat takes a penalty in accordance with RRS 44.2, the jury may penalize the boat having infringed a rule and signal the penalty:

- making a sound signal
- pointing a red flag at her, and
- hailing her sail number

The boat designated shall then take a penalty under SD1 and in accordance with RRS 44.2.

- SD4 When a boat breaks

- a sailing instruction, or
- RRS 31, or
- RRS 49 as modified by the Class rules, or
- RRS 42, as modified by RRS P5

The jury may penalize her and signal the penalty by making a sound signal, pointing a red flag at her and hailing her sail number. This boat shall then take a penalty under SD1 and in accordance with RRS 44.2

- SD5 If the boat designated

- fails to take a penalty, or
- fails to take it properly, or
- gains an advantage despite a penalty taken,

The jury may penalize her with one or more penalty turn(s) to be taken under RRS 44.2, or protest her under RRS 60.3.

SD6 When an incident has been decided during the race, this same incident shall not be ground to protest or request for redress, except

- under SD5, or
- under RRS 60.3 if the jury believes that RRS 2 may also have been broken, or under RRS 62.1(b) if an action of the boat penalized caused injury or damage, or
- under RRS 62.1(d) if RRS 2 has been broken.

A decision, an action or lack of action of the jury shall not be ground for request for redress, or reopening or be subject to appeal.

SD7 Jury boats may stay in any location on the racing area. Their positioning shall not be ground to request for redress from a boat.

SD8 The standard procedure remains applicable for all incidents not decided by the jury during the race with a penalty imposed on the infringing boat.